

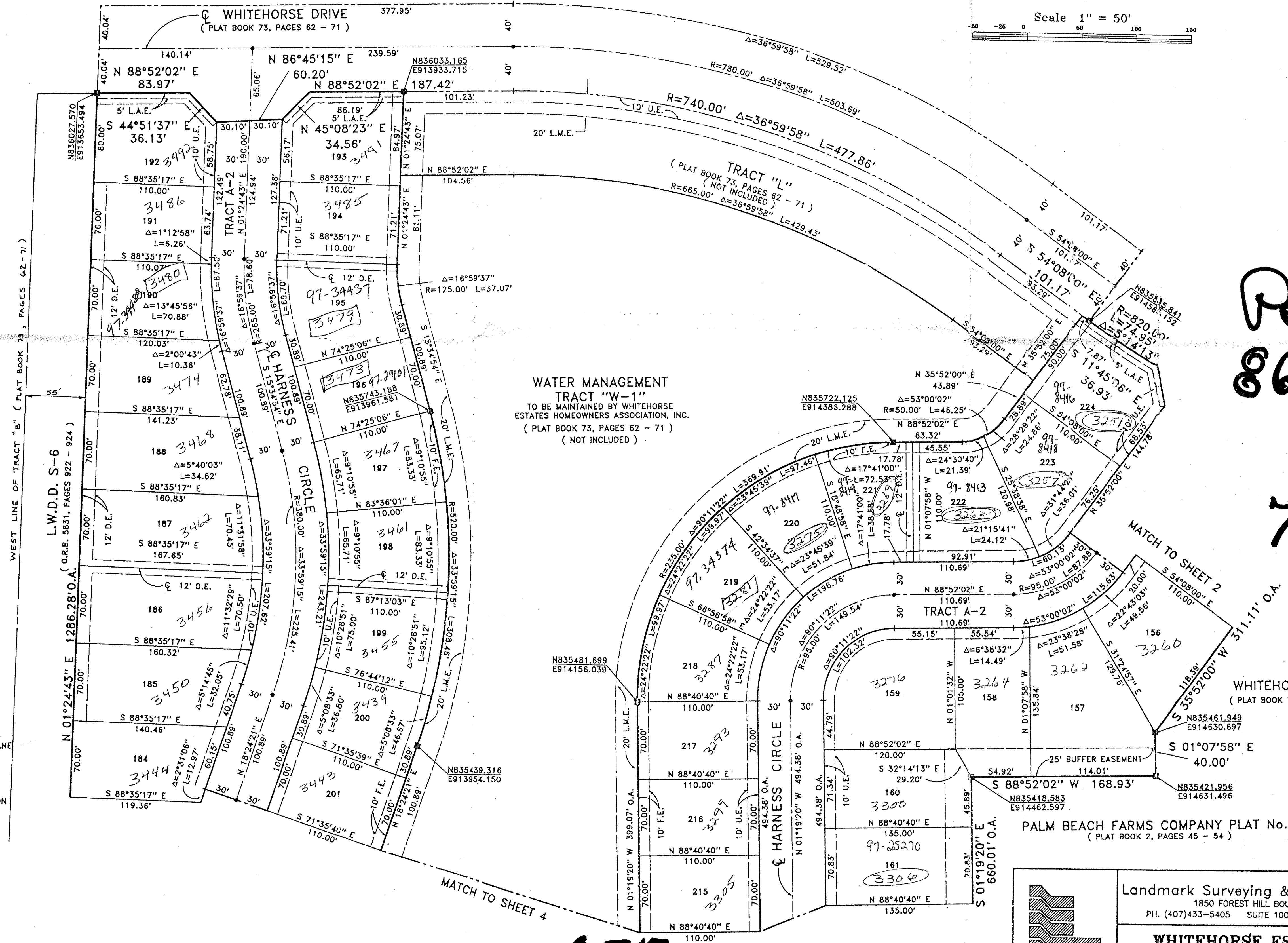
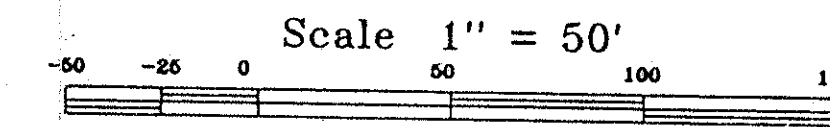
**WHITEHORSE ESTATES PLAT 2**  
 PALM VIEW LAKES A PLANNED UNIT DEVELOPMENT  
 BEING A REPLAT OF A PORTION OF TRACTS 6,7,8,9,10 AND 11, BLOCK 26,  
 PALM BEACH FARMS COMPANY PLAT No. 3, AS RECORDED IN PLAT BOOK 2,  
 PAGES 45 THRU 54, PUBLIC RECORDS OF PALM BEACH COUNTY, FLORIDA,  
 AND A PORTION OF WHITEHORSE ESTATES AS RECORDED IN PLAT BOOK 73,  
 PAGES 62 THRU 71, PUBLIC RECORDS OF PALM BEACH COUNTY, FLORIDA,  
 LYING IN SECTION 24, TOWNSHIP 44 SOUTH, RANGE 41 EAST, PALM  
 BEACH COUNTY, FLORIDA.  
 SHEET 3 OF 4 SHEETS JANUARY, 1996

0517-002

**94**

STATE OF FLORIDA  
 COUNTY OF PALM BEACH  
 This Plat was filed for record at \_\_\_\_\_  
 -M. This day of \_\_\_\_\_, 19\_\_\_\_  
 and duly recorded in Plat Book No. \_\_\_\_\_  
 on Page \_\_\_\_\_  
 Dorothy H. Wilken, Clerk of the Circuit Court  
 By \_\_\_\_\_ D.C.

TRACT "R"  
 WHITEHORSE ESTATES  
 (PLAT BOOK 73, PAGES 62 - 71)



*Ret*  
*86-100*

*78/94*

COORDINATE NOTE:  
 STATE PLANE COORDINATES SHOWN ARE GRID DATUM, NAD 83 1990  
 ADJUSTMENT, FLORIDA EAST ZONE, COORDINATE SYSTEM 1983 STATE PLANE  
 TRANSVERSE MERCATOR PROJECTION  
 LINEAR UNIT = US SURVEY FEET  
 ALL DISTANCES ARE GROUND  
 SCALE FACTOR = 1.0000179  
 GROUND DISTANCE X SCALE FACTOR = GRID DISTANCE  
 S 88° 52' 02" W (PLAT BEARING) 00' 00' 40" BEARING ROTATION  
 S 88° 51' 22" W (GRID BEARING) (COUNTER CLOCKWISE) (PLAT TO GRID)  
 SOUTH LINE OF LOTS 188  
 THRU 176 AS SHOWN HEREON

SUBDIVISION: *Whitehorse Estates*  
 BODY: 78 PAGE: 94  
 FLOOD ZONE: B FLOOD MAP #160B  
 QUAD: 63 ZONING: RT3  
 SE: 86-100 ZIP CODE: 33414  
 PUD NAME: *Palm View Lakes*

*TAZ-736*

WHITEHORSE ESTATES,  
 (PLAT BOOK 73, PAGES 62 - 71)

PALM BEACH FARMS COMPANY PLAT No. 3  
 (PLAT BOOK 2, PAGES 45 - 54)

Landmark Surveying & Mapping Inc.  
 1850 FOREST HILL BOULEVARD  
 PH. (407)433-5405 SUITE 100 W.P.B. FLORIDA

**WHITEHORSE ESTATES  
 PLAT 2**

0517-002